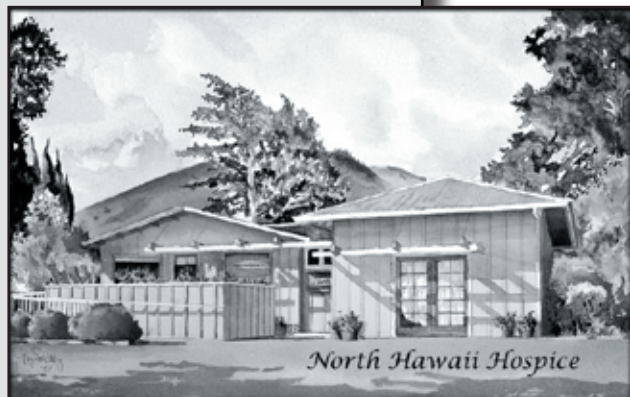


NORTH HAWAII HOSPICE

NEWSLETTER

FALL 2010



Plein Aire by Greg Schultz

COMING UP:

The Journey Of Grief and Reconciliation

Six-Week Support Group
Starting November 8, 2010
At Tutu's House
Meets Mondays at 4:30pm
Register at 885-6777

Light Up a Life This Holiday Season

Remember your loved-ones by placing memorial ornaments on a memorial tree in your community. Ornaments go on sale the weekend after Thanksgiving, for more information, call our office at 885-7547.

Save the Date!

"Sweethearts on the Range" High-Tea & Silent Auction

February 12, 2011
Saturday Afternoon at
Kahua Ranch

Letter from the Executive Director

Welcome to our Fall Newsletter. This is the issue where we publish our Annual Report and the list of our donors and supporters. First of all, I would like to thank each and every individual and organization that has made the choice to support

North Hawaii Hospice. We appreciate and value your trust. Our hospice is celebrating 25 years in the North Hawaii community and the longevity of our hospice program would not be possible without the support we receive from you. Our work in the community is YOUR work in the community and we are strong today because of your support.

This past summer our hospice lost two long-serving members of our hospice ohana, our nurse Brooke Winvick and our community volunteer Brigitte Rutgers. During this same time period our patient daily census doubled. Our staff managed to pull hard during this time, further strengthening our team spirit in spite of our personal grieving and heavy hearts. It was heartening for us to experience the community aloha and support that surrounded us as we supported so many families in North Hawaii.

As the holidays approach we are aware of how hard the holidays can be for those of us grieving the loss of loved-ones. We would like to remind everyone that we offer support to all members of our community that are grieving. Please call our office and ask about our programs, having support does indeed help. You are not alone.

Please take very good and special care of each and everyone of your loved-ones and don't forget to take the time to tell each and everyone how much they are appreciated.

With aloha and appreciation on behalf of our hospice mission,

Mahalo,

Katherine Ciano
Executive Director



NORTH HAWAII HOSPICE

*is a nonprofit organization
committed to helping pa-
tients, families and friends
dealing with life-limiting
illnesses.*

BOARD OF TRUSTEES

OFFICERS

James T. (Toby) King
President

Lynn Higashi
First Vice-President

Thomas Blackburn, Ph.D.
Secretary

Howard Edelman
Treasurer/Finance

John Dawson, M.D.
Medical Director

BOARD MEMBERS

Nancy Bouvet
Sheila Cadwallader

Bev Dawson

Marty Hind

Harold Hughes

Claren Kealoha-Beaudet

Randee Kumove

Stewart Lawrence

Keawe Liu

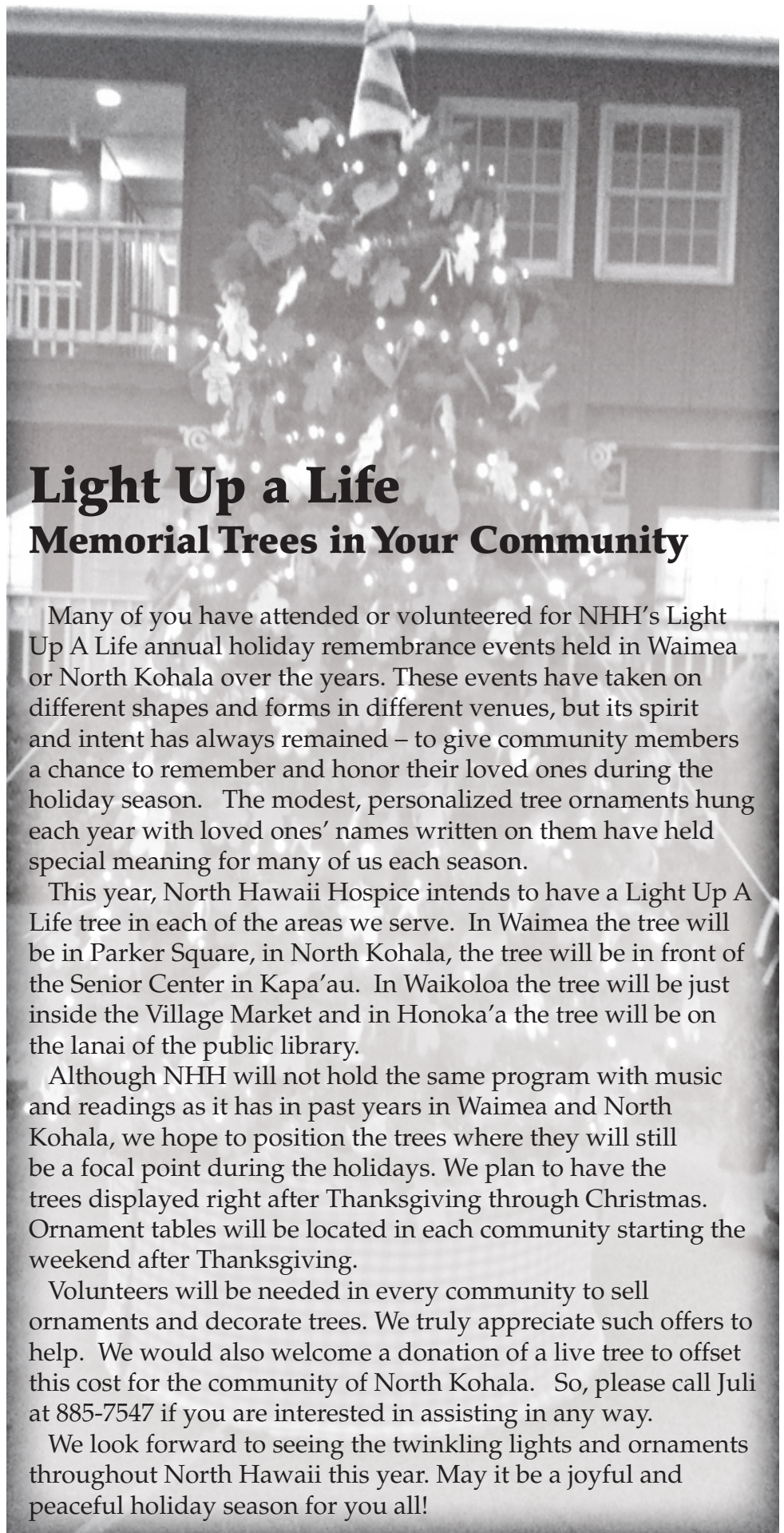
Julie Mattson

Kim Norman

Margarita Scheffel

Linda West

Ali Woods



Light Up a Life Memorial Trees in Your Community

Many of you have attended or volunteered for NHH's Light Up A Life annual holiday remembrance events held in Waimea or North Kohala over the years. These events have taken on different shapes and forms in different venues, but its spirit and intent has always remained – to give community members a chance to remember and honor their loved ones during the holiday season. The modest, personalized tree ornaments hung each year with loved ones' names written on them have held special meaning for many of us each season.

This year, North Hawaii Hospice intends to have a Light Up A Life tree in each of the areas we serve. In Waimea the tree will be in Parker Square, in North Kohala, the tree will be in front of the Senior Center in Kapa'au. In Waikoloa the tree will be just inside the Village Market and in Honoka'a the tree will be on the lanai of the public library.

Although NHH will not hold the same program with music and readings as it has in past years in Waimea and North Kohala, we hope to position the trees where they will still be a focal point during the holidays. We plan to have the trees displayed right after Thanksgiving through Christmas. Ornament tables will be located in each community starting the weekend after Thanksgiving.

Volunteers will be needed in every community to sell ornaments and decorate trees. We truly appreciate such offers to help. We would also welcome a donation of a live tree to offset this cost for the community of North Kohala. So, please call Juli at 885-7547 if you are interested in assisting in any way.

We look forward to seeing the twinkling lights and ornaments throughout North Hawaii this year. May it be a joyful and peaceful holiday season for you all!



4th Annual Big Island Classic Golf Tournament a Success!

North Hawai'i Hospice was the lucky sole beneficiary of this year's Tommy Bahama 4th Annual Big Island Classic Golf Tournament on June 14th held at the spectacular Mauna Kea Beach Resort. This year's event raised over \$46,000 for North Hawaii Hospice and what an event it was! Beautiful blue skies, gentle breezes and warm sunshine greeted our golfers (140 of them!) along with lively tropical music and a breakfast buffet with Bloody Mary's.

There wasn't a second to spare between a competitive putting contest won by Larry Roberts of Canada-France Telescope who won four rounds of golf at the Mauna Kea and the wild and crazy Lucky Ball Drop. A helicopter flew overhead and dropped a bucket of 400 golf balls over a hole and the closest to pin was Danny Buris of Pura Vida Gallery who won two free tickets on Continental Airlines. He will soon be heading off to Spain.

There was a massage station limbering up the golfers to keep them moving along in order to reach the wine and cheese party and dinner celebration at Tommy Bahama's at Mauna Lani. The evening included a live auction with Tommy "Kahikina" Ching as emcee and an incredible silent

auction.

The overall winning team of this year's

tournament was Jaci Sowden, Ken Sowden, Jack McMenimem, and Brett Smith. Congratulations!!

Our Golf Chair from North Hawai'i Hospice was once again Marty Hind and the day was made possible by a large and loyal group of North Hawai'i Hospice Volunteers,

which included much of the Board. Sharon Potter rounded up Board President Toby King, Executive Director Katherine Ciano, Julie Mattson, Kim Norman, Joan Moynahan, Tom Blackburn, Lynn Higashi, Cathy Youtkus, Rick Potter, Dick Tenderella, Margarita Scheffel, Dee Dee Warren, and Harold Hughes. Gayle Hubbard and Colleen Norris from the NHH office kept everything on track and running smoothly!

Our thanks to all the golfers for coming out to support North Hawai'i Hospice, all our tee sponsors and prize donors, all our friends at Tommy Bahama's, including John Nguyen, Brenda Supnet and Kim Graybill, for your hard work and generosity, as well as the golf crew and Brandon Wallraff at the Mauna Kea, and the many volunteers and staff that made this great event possible! Hope to see you all again in 2011!

Mahalo nui loa!



WHO'S ON BOARD?

At the end of the NHH fiscal year in June, several of our longest serving board members reached the maximum number of terms according to our by-laws: Sharon Potter, Dee Dee Warren, and Linda Clifford. All three of these dedicated individuals have held leadership positions and have contributed greatly to the strong and stable hospice organization that we are today. Although these ladies are taking a break from board service, they will continue to be supportive friends of our hospice organization and will serve on committees or provide consultation.

We also said goodbye to several board members due to moves or changes in employment location: Chuck Erskine, Mary Hunter, Jim Warson and Cathy Youtkus. We thank all of them for their service and wish them good fortune in their new endeavors.

Our nominating committee had to get busy and we are happy to report that we have added five new board members. All of the new additions have impressive backgrounds in both business and healthcare that will be crucial to the board's work of ensuring quality and compassionate service to our hospice patients and families.

Psychologist **Claren Kealoha-Beaudet** was born and raised on the Hamakua Coast of the Big Island. She is a proud graduate of Honokaa High School.



Claren received her bachelor's degree and a secondary teacher certification from the University

of Hawaii at Hilo. She went on to earn a master's degree in counseling psychology from the American School of Professional Psychology and a doctorate degree in clinical psychology from Argosy University Hawai'i. Culture, diversity, and societal differences in world view are Dr. Kealoha-Beaudet's area of specialty and interest. Dr. Kealoha-Beaudet has an active private practice in Kamuela where she lives with her husband, Brandi Beaudet and their two sons Keawemauhili,

age seven and Kamaukealoha, age five.

Bev Dawson

was born and raised on Oahu in a sugar plantation village. Her parents had emigrated from the Philippines just after World War II. Bev got a bachelor's degree in nursing from UH Manoa and worked briefly at Kapiolani Hospital in Honolulu before meeting and marrying her husband, Dr. John Dawson. The newlyweds moved to British Columbia where Bev worked in the psychiatric unit of a rural hospital. They then moved to the island of American Samoa where Bev worked at LBJ Tropical Medical Center. After returning to Oahu, Bev got her master's degree in public health. The Dawsons first moved to the Big Island in 1978 and have been key figures



in the healthcare community in Waimea for more than 30 years. John Dawson has served as the medical director for our hospice since its inception and Bev has worked in her husband's busy medical practice as well as at Hawaii Preparatory Academy. Bev enjoys being outdoors, walking, tennis, golf, gardening and traveling. For all of her life, Bev has worked towards helping people improve the quality of their lives. She believes in the hospice mission because she believes that dying is also a part of life and she looks forward to working with the NHH board to improve the quality of life for hospice families.

Wm. Stewart Lawrence

is originally from the American South. He was born in Tennessee, lived in Georgia and



attended Tulane University in New Orleans where received a bachelor's degree in philosophy. Later, he moved to Sydney Australia and went to nursing school. He worked briefly as a nurse before becoming a doctor. Dr. Lawrence got his medical degree from the University of Mississippi and completed his residency in Denver, Colorado before moving to Hawaii 20 years ago. Dr. Lawrence specializes in Internal Medicine and Geriatrics and has a private practice in Waikoloa Village. Dr. Lawrence served as medical director for Hospice of Kona for 8 years and his wife, Lisa Lawrence, is a certified hospice nurse who has worked at NHH for more than 20 years. Dr. Lawrence brings his clinical experience with hospice to our board of trustees and will be actively involved in our patient services committee.



Keawe Liu was born on Oahu and graduated from Hawaii Preparatory Academy and the University of Colorado at Boulder. He received his master's in Educational Leadership from

the University of Hawaii at Manoa. After teaching Hawaiian and Pacific history for six years at HPA, he moved into several different administrative roles at Parker School where he worked for seven years. Keawe returned to HPA in 2009 as the director of advancement, overseeing all fundraising and alumni-related initiatives. He and his wife, Lyda, have two young children and live in Waimea. Keawe brings a wealth of non-profit business experience to our board of directors. Keawe enjoys golf and will also be a great addition to our golf event planning committee.

Linda West was born in Spokane, Washington and grew up in a small rural farm community 60 miles West of Spokane - close to Grand Coulee Dam. Her father's grandfather was a pioneer who emigrated from Germany and homesteaded land in the area. Most of this land is still in wheat production and has been passed down through the family for four generations. All



of her family still lives in the area except for Linda. Linda came to Hawaii over 40 years ago after graduating from Washington State. Her first job in Hawaii was as the assistant buyer in the designer salon at Liberty House at the Ala Moana shopping Center. When she moved to the Big Island, she continued her retailing career for several years and then went into real estate - which has been her career for 30 years. She enjoys real estate because of the "people part" of her job.

Linda enjoys traveling around the island each day, exploring and showing people properties. It makes each day a new adventure. Linda also enjoys golf, reading, walking, getting together with friends and family and traveling. She and her husband Rick have four children and seven grandchildren. Linda has been volunteering for hospice fundraisers for several years. Of all of the organizations and boards she has been a part of over the many years, she feels that NHH is the organization that really does something that helps people. She is honored to have been asked to serve as a board member because she knows that NHH will likely be called to help her friends and family in the future.

We are very excited to have these five exceptional new leaders join our Board of Trustees.

Remembering Brigitte Rutgers

Where angels come from...

by WILLIAM JARDINE

Brigitte Letessier Rutgers left this earth a better place. She was revered, admired and adored as few others, and her work with North Hawaii Hospice was one of her greatest pleasures. Yet, her quiet ways deflected attention from of her personal story.

Brigitte was a child of war, born into the Algerian Revolution in 1947 and eventually driven from her home country. By age fifteen she was a refugee on the crowded streets of Marseilles with so many other dispossessed Algerian families. What could she hope for in a world where she had seen only strife and dreadful loss? Yet, a year later she found herself in the rich, scented air of Tahiti, where her native French entwined with the delicious rhythms and warmth of French Polynesia, and this is where she soon found true love in a handsome young man with both great strength and deep kindness. She married Nick Rutgers and together they led a military life in America, where she would learn her English from soap operas as her growing family tumbled and laughed at her feet. The distant echoes of war and pain began to fade.

She first smelled the tangy perfume of Waimea's great eucalyptus trees in 1984. By then she had grown accustomed to moving her family to follow Nicky's aviation career. She had grown to love the Great Plains of the American Midwest and our little cow town was pretty but didn't look like the best choice Nicky had ever made! Yet, it was here under a canopy of sparkling tropical stars that she bloomed into the angel she was meant to be. Her natural desire to share, her courage and her calm acceptance of all that life brings were remarkable, but she also had such determination, talent, and skill.

Nancy Bouvet, Sheila Cadwallader and Sally Wooddell started encouraging Brigitte to take a harder look at being a hospice volunteer and encouraged her to take the required training, but Brigitte resisted, saying that it wasn't in her

nature and it might be too depressing and so on. We all have these same reservations, but we don't all have a close friend like Nancy. Nancy Bouvet's insistence is greater than almost anyone's resistance! Before too many years had gone by, Brigitte agreed to volunteer and our angel was given her message of hope, love, courage and peace. Through North Hawaii Hospice, Brigitte found that she could do good in a world which needed lots of it.



Brigitte went on to serve more than 13 years for hospice in many different capacities. As a patient care volunteer, Brigitte served as a companion to families facing terminal illness; cooking for them, comforting them, and being someone who could listen. Brigitte also served on the NHH board participating in projects that included the Light up a Life event held at Christmas to memorialize loved-ones who have passed. Brigitte was an accomplished chef and was part of a group of Waimea hostesses that catered the elegant high-tea fundraisers at the historic homes in Waimea. Brigitte's talent for design earned her the nickname "Ms. Ambiance" and she was a vital part of making so many of the hospice galas dazzle with sparkles and fairy dust.

Last May, Brigitte was honored as Volunteer of the Year and was presented with a special Tiffany & Co. necklace donated in her honor. Brigitte hated being in the limelight, but shortly after the event she wrote this message:

"I get so much more from patients than I can ever give back to them and their families. It has been a great honor over the years to be welcomed in their homes and trusted with their loved ones. I have made some great friends through this and have so many special memories. I have truly received more than I have given and will always treasure my time with these families."

"Angel" means "messenger," and Brigitte's message was clear and true and right. It is the quality of life that is our treasure and it is in

giving that we receive life's greatest gifts.

With that message, along with her kindness and her courage, Brigitte served the lives around her, and we are so much richer for having known her.

Our Brigitte passed from this earthly life surrounded by her beloved family and in the care of the hospice she served so well.

A Bientot, Brigitte.



Nick and Brigitte Rutgers.



Remembering Our Colleague and Friend, Brooke Winvick, RN, CHPN

We are saddened to report the passing of our hospice nurse, Brooke Winvick, on August 24, 2010. Brooke had been employed at NHH for more than 10 years. Brooke's illness, a rare form of cancer, was unknown until three short weeks before her death. Brooke had very little time to adjust to her terminal diagnosis but wanted very much to travel to the mainland to pursue treatment but it did not come to pass; Brooke's illness was far too advanced for her to make her journey. Brooke's family members were able to travel to visit her hospital room in Kona and Brooke's beloved hospice colleague and mentor, Fran Woollard, was able to travel from Oregon to comfort Brooke during her last two days. Brooke passed surrounded by her brothers, Keith and Neal, several of her hanai sisters, and hospice nurse and colleague Lisa Lawrence.



Brooke will be remembered for her independence, her ability to keep a healthy separation between her hospice work and her personal life, the compassionate care she provided to her hospice patients and families, and her unforgettable laugh and smile.

Brooke's credentials included national certification as a hospice and palliative care specialist. In her memory, a fund has been established to provide the opportunity for our clinical staff to achieve certification or to pursue advanced training in the area of hospice and palliative care. Dr. Wm Stewart Lawrence has provided the initial donation for a scholarship fund in memory of Brooke.

We will always be grateful to Brooke for reminding us to keep the joy in our lives and for serving as an example of a hospice professional that knew how to make time for rest and restoration.

Thank you Brooke!

NEW FACES AT HOSPICE

Reinhard Fritsch RN, PhD

Registered Nurse on-call

Originally from northern California, Reinhard joined our hospice staff in May to be on-call for our patients after hours and on weekends. Reinhard is well known in North Hawaii due to his many years of working with Kohala Home Health. Reinhard has been a registered nurse since 1987 and has worked at North Hawaii Community hospital since 2002. Reinhard brings a calm, warm and genuine presence to patients and families in their homes.



Cynthia Sheldon ("Cindy")

Clinical Services Assistant

Cindy is from Denver, Colorado and worked for more than 20 years at Swedish Medical Center; most recently in the Emergency Department and in Trauma Service. Cindy moved to Hawaii in 2008 with her husband and daughter. Most recently, she worked at North Hawaii Community Hospital as unit secretary. She joined NHH to oversee patient medical records and provide clinical support for our hospice team. Cindy lives in Waikoloa with her husband and daughter and enjoys taking Zumba classes in her spare time.



Kristin Wohlschlagel, RN

Registered Nurse on-call

Kristin got her start in healthcare as a volunteer firefighter and EMT in a rural mountain community in California. She became a registered nurse and moved to Hawaii in 1994. She has worked in the emergency department at Hilo Medical Center for the past seven years. Most recently, Kristin moved to North Kohala just in time to join our team in August of 2010. Kristin's assured and gentle expertise has been greatly appreciated by our patients and families in North Kohala.



Hospice goes Electronic!

With grants from the Hawaii Community Foundation, the O'Neill Foundation, the Cleo Foundation, the Atherton Foundation, and North Hawaii Rotary, our North Hawaii Hospice was finally able to enter the world of electronic patient records and electronic billing, completely upgrade our office computer system, and refurbish our website.

This project took more than a year to complete and was completely funded through foundation grant writing.

Special Mahalo to our helpers in the community: everyone at Independent Phones who helped us with re-wiring our office, Tracy Bloom who donated many hours of support when we installed our new server, Mike Hale from Parker School who also assisted with the new network, Jim Hood from Mobile Computer Doctor who donated a portion of his time getting the bugs out and to Beth Hood from Websites with Aloha, who also donated a portion of her time for website design.

LOG ON to see our NEW WEBSITE at northhawaiihospice.org

VOLUNTEER CORNER

Big Mahalos to...

Olivia Armandroff and Hallie Jacobson

This summer we were happy to have Parker School student, Olivia Armandroff, back volunteering in the office at NHH. This was Olivia's second summer volunteering with us. Olivia always brightened our day with her positive attitude, smile and willingness to take on any project. Olivia put together admitting and informational packets, volunteer applications, created various Excel spreadsheets for staff and organized and neaten up our volunteer files. She has also taken up the work of creating and maintaining a NHH patient memorial board and album with fellow student and NHH volunteer, Hallie Jacobson.



NHH volunteers Hallie Jacobson and Olivia Armandroff.

Hallie, who is a Hawaii Preparatory Academy student, began volunteering with NHH this summer. Another bright and cheerful presence, Hallie was also eager to help with any projects we gave her. She helped with Excel spreadsheets and organized and made a map of all of the volunteer materials and supplies.

Both Olivia and Hallie plan to attend the October volunteer training classes this month and carry on their work with the NHH patient memorial board and album. NHH is thankful to have two such dedicated young people in our ohana and very much appreciate their contribution to our organization.

Suzi from Suzi's Scrapbooking Paradise

We are very grateful to Suzi from Suzi's Scrapbooking Paradise in Waimea for donating materials for our NHH patient memorial board and album. Suzi has also generously offered her time and expertise to help make our patient memorial board and album look as beautiful as possible. Suzi has made available a work space and ongoing assistance to Olivia and Hallie as they continue their work on this project honoring the lives our patients.

...and

Our great appreciation goes out to all of our NHH volunteers and members of our community who generously give their time and support to our patients and their families. You are the heart of North Hawaii Hospice!

NORTH HAWAII HOSPICE ANNUAL REPORT

The following statistics pertain to fiscal year July 1, 2009 to June 30, 2010.

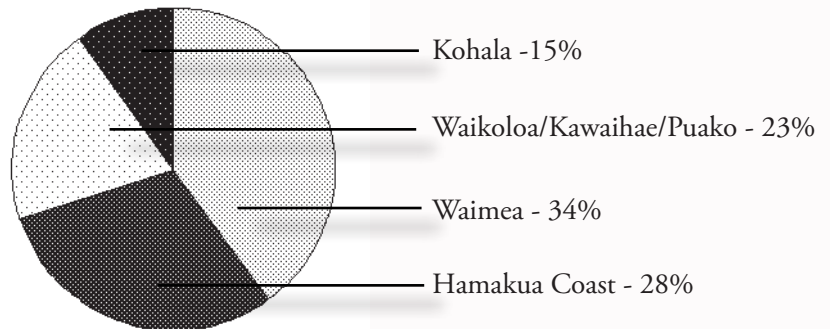
Volunteer Hours Donated

Direct Care	282
Indirect Care	1,445
Total Hours	1,727

Age Range of Our Patients

Age of our oldest patient	97 years
Age of our youngest patient	10 days
Average age of our patients	74 years

Hospice Patients by Region



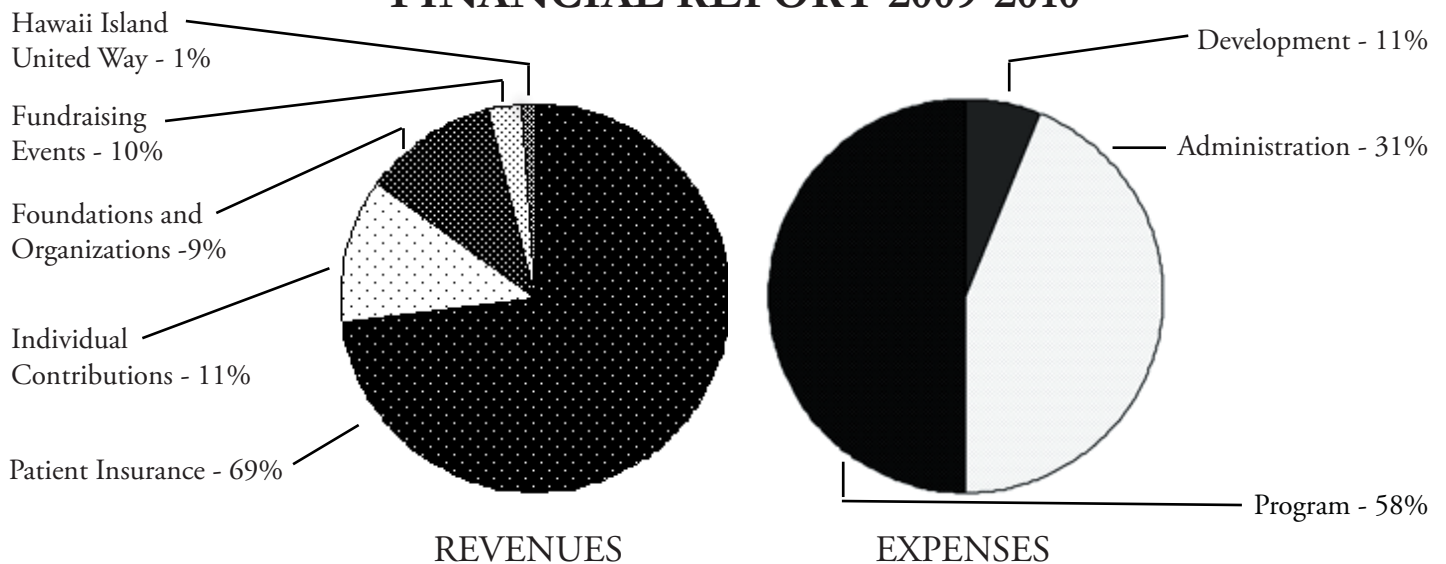
Grief and Bereavement

Number of contacts with hospice families for grief resolution	756
Number of contacts with community members for grief resolution	147
Number of contacts through community support group programs	58

Patient Care Services

Number of patients and families in hospice	81	Patients with a cancer diagnosis	60%
Number of patients discharged alive	6	Patients with a non-cancer diagnosis	40%
Average length of stay in hospice	79 days		

FINANCIAL REPORT 2009-2010



Gifts to North Hawaii Hospice

Mahalo to Our Donors

Our giving report includes the names of those individuals, community groups and businesses who have given gifts to North Hawaii Hospice from July 1, 2009 to June 30, 2010.

Commemorative gifts were received in memory of the following people:

Esther Adams	Emelia Gomes	Jitsuo Kotake	Stephen Poggione
Florencio Alegre	Jean Greewell	Ernest Kurlansky	Kanani Polina Malia
Marlyn Axelrod	Barbara Griffin	Ruth Landry	Kuuipo Pule
Paul Barker	Swan Groom	Joan L'Orange	Ben Radin
Robert Biesiada	Erik Hazelhoff	John Lowrey	Jack Ramos
Ian Bowman	Karl Heller	Edward G. Mack	Dennis Rose
James Breen	Herbert Hiatt	Shoichi Maeda	Richard Rowe
Mary Cacoulidis	Rose Higaki	Ilse Martin	Sueto Sakamoto
Berlinda Camara	Irene Higashi	Theresa Ann Martin	Sharon Saltus
Mildred Cantyne	Mike Higashi	Florence McPeck	James Santiago
Alejandro Castillo	Mitsumo Hirayama	Norbert Methven	Marilyn Schweig
Jan Chillingworth	Shohei Hiyama	Elizabeth Miller	Rose Mary Silveus
Frank Colleadro	Bradford Houser	Ronald Mochida	Janet Smith
Frank Cook	Barbara Hutchinson	Nancy Mohr	Peggy Sperring
Eiko Doi	Clyde Imada	Stanley Murakami	Joseph Spielman
Earl Ebenal	Likito Ishii	Marion Nahulu	Riyoichi Uyama
Bonifacio Etrata	Verna Jaynes	Clarence "Bully" Nakaahiki	Tamaki Uyama
Lui Faleafine	Creighton Kahananui	Thomas Nakahara	Gil Visser
Yolanda Fernandez	Kamana	Kaio Nishida	Benjamin Wald
Nell Ferreira	Peter Kamber	Shuhei Ohta	Moses Wallace, Sr.
Jesse L. Fishback	Mildred Kanda	Frances Otake	Maryann Warner
Ruth & William Foster	Clifford Kaneshiro	Clemente Pampo	Winona Watson
James Frazier	Sonny Kaniho	Maurice Patterson	Harvey Wong
Takeshi Fujino	Peter Kim	Clement Perez	Sueo Yamasaki
Patricia Garties	Yoshio Kimura	Doris Pichetti	Hideo Yanazaki
Clara Gomes	Alicia King	Nancy Piianaia	Frederick Yokoyama

MAJOR DONORS (\$5,000+)

Atherton Family Foundation
Cleo Foundation
Mr. Daniel Duval
Mr. and Mrs. David B. Hess
John M. Simpson Foundation
Rhoady and Jeanne Marie Lee Living Trust
Moonglow Fund at the Hawaii Community Foundation
William J. and Dorothy K. O'Neill Foundation

SUSTAINERS (\$1,000-\$4,999)

Mr. and Mrs. Samuel Ainslie
Mr. and Mrs. Frank Atherton
Maribeth Benham Family Foundation
Big Island Mechanical, LLC
Thomas C. Blackburn, Ph.D. and Kate Bell, Ph.D.

Mr. Bill Borkan
Mr. and Mrs. Peter Boynton
Ms. Balbi Atherton Brooks
Mr. Wayne Brumaghim
Mr. Chris Buckalew
Ms. Diane Carlson & Mr. Bill Freyd
Dr. and Mrs. James Clifford
Mr. and Mrs. James Lee W. Croft, Jr.
Mr. and Mrs. Bob Ditmore
Mr. Michael Dorsey
Mr. James W. Du Pont
Mrs. Judy A. Frazier
Mr. and Mrs. Steven Gajadhar
Hawaii Hotel Industry Foundation
Hawaii Water Service Co.
Mr. and Mrs. Robert Hind, III
Mr. and Mrs. Nathan Hirayama
Mr. and Mrs. Oliver Hutaff, Jr.
Mr. and Mrs. Doug Gordon- Johnson

Mr. Philip Johnson and Ms. Kelly Imboden
Kai Pono Builders, Inc.
Mr. and Mrs. James Tobin King
Mr. Thomas King, Jr.
KTA Super Stores
Mr. and Mrs. Bruce Kumove
Mr. and Mrs. James Lally
Alan Gartenhaus & Rhoady Lee, III
Mr. and Mrs. Mel Macy
Dr. and Mrs. John F. McDermott, Jr.
Moana Pa'akai, Inc.
Mr. and Mrs. Pete Moynahan
Mr. Paul Nyquist
Mr. and Mrs. Stephen Pierce
Mr. David T. Pietsch, Jr.
Quality Builders, Inc.
Mr. Robert L. Reed
Rotary Club of North Hawaii
Mr. and Mrs. Jerry Sakamoto

Mr. and Mrs. Frank Schenk
 Mr. Robert Skladzien
 Sleek to Chic Salon and Day Spa
 Sloan Galleries
 Dr. John D. Stover and
 Mr. Bayardo Aviles
 Mr. and Mrs. Douglas Troxel
 Mr. and Mrs. Pono Von Holt
 Watterson Painting

PATRONS (\$250-\$999)

Anonymous (2)
 Dr. George Ainge and
 Dr. Leesa Miyasato
 Aloha United Way
 Mr. and Mrs. Peter Armstrong
 Mrs. LeBurta G. Atherton
 Mr. and Mrs. Archie Blake
 Mr. and Mrs. Dale Bleacher
 Mr. Bradley B. Bogard
 Mrs. Marilyn Briefs
 Mr. Michael Brodowy
 Mr. Zadoc W. Brown
 Mr. Robert Butterfield
 Mr. Richard Castro
 Mr. Peter Messmer and
 Ms. Elaine Christianson
 CLO Marketing, Inc.
 Mr. and Mrs. Richard Cornuelle
 Charles A. Crabb, Trustee
 D & K Construction
 Daleico Ranch
 Dr. and Mrs. John Dawson
 Mr. FJ Desilets
 Mr. John Deveau
 Mr. Nelson Doi
 Mrs. Tsuneko Doi
 Mr. and Mrs. Howard Edelman
 Mr. and Mrs. Chuck Erskine
 Mrs. Jane Fishback
 Mr. and Mrs. Gordon Fujino
 Mr. Ryan Funasaki
 Mr. and Mrs. Rey Ganir
 Mr. Greg Gillion
 Mr. and Mrs. James Growney
 Mr. and Mrs. Robert Gulley
 Mr. and Mrs. Howard Hall
 Heartwood Works, Inc.
 Mr. Wayne Higaki
 Mr. Thomas M. Hollenbeck
 Dr. and Mrs. Stephen L. Hooper
 Mr. and Mrs. Harold Hughes
 Mr. and Mrs. David Hutchinson
 Mr. and Mrs. Wilson Jacobson, Jr.
 Mr. and Mrs. Roland Kaneshiro

Ms. Abigail Kekaulike Kinoiki
 Kawananakoa
 Mr. Christopher Keiter
 Sydnee Kekina
 Mr. Howard A. Kent
 Ms. Linda Kobayashi
 Mr. and Mrs. Jerry K. Kubo
 Lanihau Properties. LLC
 Mr. Frank Latinis
 Ledson Construction
 Mrs. Janet N. Lindsey
 Mr. and Mrs. Richard Little
 Mr. and Mrs. Hans L'Orange
 Mr. Pete L'Orange and
 Ms. Gerry Goodenough
 Mr. Gene Matsushige
 Mr. Marshall H. Matthews
 Mr. and Mrs. Dave McCoy
 Mr. Jack McMenimen
 Mr. David Meadors
 Merriman's Restaurant
 Mr. Bob Momsen
 Mr. and Mrs. David Monahan
 Mr. Greg Mooers and
 Ms. Sharon Peterson
 Ms. Jewel D. Moore
 Mr. Rory Morrison
 Dr. and Mrs. Scott Nakahara
 Mr. and Mrs. Kurt Nielsen
 Mr. and Mrs. Fred Nonaka
 Mr. and Mrs. Jim Ed Norman
 Mr. and Mrs. George Oliva
 Takeshi Otake
 Parker Ranch, Inc.
 Mr. and Mrs. Stephen Perry
 Mr. Greg Peterson
 Mr. Dan E. Philipp
 Mr. and Mrs. David Pietsch
 Mr. and Mrs. Richard Potter
 Mr. and Mrs. Mike Prohoroff
 Mr. Larry Roberts
 Mr. and Mrs. David Rotstein
 Mr. and Mrs. Francis Ruddle
 Ms. Margarita J. Scheffel
 Dr. and Mrs. Niall Scully
 A. K. Shingle and Tim Gaffney
 Mr. Zachory Smith
 Mr. and Mrs. Barry Snowbarger
 Mr. and Mrs. Edwin Sorenson
 Mr. and Mrs. C. Kenneth Sowden
 Stacy's Bookkeeping, Inc.
 Mr. Lon Ussery
 Mr. and Mrs. Joseph Wagner
 Waikoloa Community Church
 Mr. WC Wells
 West Hawaii Concrete

Chizuko Westrum
 Mr. and Mrs. William T. White, III
 Cindy and Terry M. Wick
 Mr. and Mrs. Woodson K. Woods
 Mr. Bill Zabolski
 Mr. Michael Zola

BENEFACTORS (\$100-\$249)

Anonymous (8)
 Ms. Stephanie Ackerman
 Mr. and Mrs. Walter Ackerman
 Mr. and Mrs. Chris Agorastos
 Mr. and Mrs. Daniel Akaka, Jr.
 Mr. and Mrs. Clarence Ako
 Mrs. Jean M. Anderson
 Annunciation Catholic Church
 Mrs. Adele Bahl
 Dr. Susan Barnes
 Mr. and Mrs. John O. Barton
 Mr. and Mrs. Michael Bates
 Mrs. Caryl Bayless
 Ms. Ann Bennett
 Mr. and Mrs. Richard Bergan
 Big Island Candies
 Mrs. Lala Black
 Blasting Technology, Inc.
 Mr. and Mrs. Ken Block
 Mr. and Mrs. Eric Bollinger
 Mr. and Mrs. John Bonella
 Mr. and Mrs. John Broadbent
 Mr. and Mrs. Chris Brown
 Mr. and Mrs. Lester Buckley
 Mrs. Kitty Budge
 Mr. and Mrs. Gary Cadwallader
 Mr. Bobby Camara
 Mr. and Mrs. Allan Campbell
 Mr. Michael Casey
 Ms. Jane Caughey
 Keith C. Victorino and
 Betty Jane Cazimero
 Mr. and Mrs. Robert Chancer
 Mr. and Mrs. Stanley Charles
 Mr. and Mrs. Greg Chilton
 Ms. Melanie Collier
 Mr. and Mrs. Phil Conley
 Mr. Joseph Cootey - Kamuela Electric, LLC
 Mr. and Mrs. Richard B. Cushnie
 Ms. Grace Czerwinski
 Kathy and Gus Damon
 Mark de Reus
 Mr. and Mrs. Shigemi Degawa
 Mr. and Mrs. Romel Dela Cruz
 Destinations in Paradise
 Ms. Karen Doi
 Ms. Kathleen Eastwood
 Mr. and Mrs. Dick Ednie
 Mr. Gene Erger

Ms. Marilyn T. Fitzgerald
 Mr. George B. Fry, III
 Mr. and Mrs. Frank Fuchino
 Mr. Susumu Fujii
 Mr. Garret Fujino and
 Ms. Joyce Kagawa
 Greg and Nancy Gale
 Dr. and Mrs. Murray Gardner
 Mr. Guido Giacometti and
 Ms. Susan Tius
 Dr. and Mrs. Sam Gingrich
 Mr. and Mrs. Wayne Gocke
 Mr. Jack Goldstein
 Ms. Laure Gomera
 Ms. Farrah-Marie K Gomes
 Mr. and Mrs. Andrew Goodman
 Mr. and Mrs. Thomas H. Goodspeed
 Mr. and Mrs. Steven Grasso
 Mr. and Mrs. David Greenwell
 Mrs. Shirley Gunderson
 Mr. and Mrs. Bill Hastings
 Hawaii Pacific Area Combined
 Federal Campaign
 Mrs. Elizabeth Heller
 Mr. Robert J. Hendrickson
 Ms. Susan Herhold
 Mr. and Mrs. Jerry Hiatt
 Ms. Lynn Higashi
 Mr. and Mrs. Jeffrey Hirako
 Ms. Dee Dee Hoffmann
 Mrs. Carla Houser Partma
 Loring and Lloyd Howell
 HPA's - Isaac's Art Gallery
 Roen Hufford
 Dr. and Mrs. Robert M. Hunter
 Sylvia and Brian Hussey
 Ms. Mitsuko Inamine
 Mrs. Doris Jacober
 Jerry and Pat Jamesson
 Mr. and Mrs. Robin Jaquith
 Mr. and Mrs. Bill Jardine
 Mr. Alcy D. Johnson
 Mr. and Mrs. Douglas Johnson
 Mr. and Mrs. Albert Kawabata
 Kawamata Farms, LLC
 Mr. and Mrs. Wendell Kawano
 Mrs. Eva Kealamakia
 Mr. and Mrs. Robert D. Kelce
 Mr. and Mrs. Mickey Kerr
 Mrs. Julia Kimura
 Mr. and Mrs. Charles King
 Mr. and Mrs. Mori Kiyota
 Mr. and Mrs. Adi Kohler
 Mrs. Amelia LaJambe
 Mr. and Mrs. Guy Lam
 Mrs. Hiram Lewi
 Mrs. Katy Lowrey
 Mike Luce and Suzanne Hill

Mr. and Mrs. George Lyons
 Mr. and Mrs. Noriyoshi Masumoto
 Mauna Lani Resort/Hotel
 Mr. Kazunobu Mayahara
 Mr. and Mrs. Joseph McCleskey
 Forrest McFall and Helen Swinney
 Dr. and Mrs. David McNaughton
 Christopher Metzler
 Mrs. Winnie Mochida
 Mr. and Mrs. Terry Mohr
 Mr. James Moore
 Ms. Marene Morita
 Mrs. Eiko Murakami
 Tami T. Murakami
 Mr. Eli Nahulu
 Mr. and Mrs. Larry Nakamoto
 Mr. and Mrs. Kyle S. Nishimura
 Dr. and Mrs. Roy Ohata
 Mrs. Yaeko Ota
 Ms. Nancy Perez
 Rock and Melva Perez
 Ms. Katherine B. Phinny
 Mr. and Mrs. Alan Pinn
 Mr. Mel Pobre and Ms. Julie Mattson
 Mr. and Mrs. David Powell
 Mrs. Dorothy Ramos
 Mr. and Mrs. John Ray
 Mr. and Mrs. Ted Redo
 Kerry and Claire Ricketts
 Ms. Colleen Rowe
 Ms. Julie Rowe
 Mr. and Mrs. Paul Rufo
 Mr. Nick Rutgers, III
 Mr. and Mrs. Ken Sanford
 Ms. Joan Santaferarro
 Mr. and Mrs. Jeffrey Schultz
 Ms. Priscilla A. Sears
 Mr. and Mrs. Scott Shannon
 Mr. Frank Snow
 Mr. and Mrs. Franz Solmssen
 Mr. Richard Spiegel
 Mr. James W. Steckling
 Mr. and Mrs. John Steinbacher
 Mr. and Mrs. Craig Taga
 Mr. and Mrs. Jerry Takata
 Mr. and Mrs. Shiro Takata
 Takata Store
 Mr. and Mrs. Toshio Takeya
 Mrs. Suzanne Tamashiro
 Mr. and Mrs. David Tarnas
 Ted's Garage & Towing Service, Inc.
 Mr. and Mrs. Danny Teller
 Mr. and Mrs. Leon Thevenin
 Mr. and Mrs. Ron Tooman
 Ms. Henrietta Visser
 Joseph Vitorino
 Waikoloa Bridge Club
 Waikoloa Development Co., Ltd.

Waimea Senior Citizens Club
 Dick and Bobbie Walker
 Elaine and Sherman Warner
 Mr. and Mrs. Robert Warren
 Dr. Jim Warson
 Mr. and Mrs. Charles Webster, Jr.
 Ms. Sim Wenner
 Mr. James Whitman
 Mr. and Mrs. Henry Clint Williams
 Ms. Cindy Winegar
 Mrs. Leona Wishard
 Dr. and Mr. Stanley Wishnick
 Ms. Priscilla Witt
 Ms. Norma Wong
 Mr. and Mrs. Allen Wooddell
 Mrs. Miyoko Yamasaki
 Mr. and Mrs. Myron Yamasato
 Mr. Mel Yanos
 Mrs. Betty Young

DONORS (\$1-\$99)
 Anonymous (12)
 Mrs. Juanita Jane Aganus
 Mr. and Mrs. Alexander A. Akau
 Ms. Eleanor Ammen
 Mr. and Mrs. Charles Anderson
 Kellyanne Anderson
 Mrs. Josephine Andrade
 Arc of Hilo
 Ms. Audrey Asato
 Ms. Arlene Ashida
 Deborah Au
 Mr. and Mrs. Wayne K. Awai
 Mr. Alan Axelrod
 Mr. and Mrs. Emil Bader
 Mr. and Mrs. Erwin Baldwin
 Dr. & Mrs. John Balfour
 Bamboo Restaurant
 Ms. Bonnie Beckett
 Ms. Elizabeth Behny
 Ms. Beverly Blessings
 Mr. and Mrs. Pierre Bouvet
 Ms. Kathleen Brillhante
 Mr. and Mrs. George Britto
 Buzz's Sand Trap, LLC
 Mr. and Mrs. George Cabral
 Mrs. Bernadette Cacoulidis
 Mr. and Mrs. Brodie Callender
 Mrs. Beryl Cambridge
 Roldah N. Cameron
 Dr. and Mrs. Charles Campbell
 Mr. and Mrs. James Cantyne
 Mr. and Mrs. Richard Cartwright
 Ms. Maile Carvalho
 Mr. and Mrs. Rick Casey
 Mr. George J. Caspell
 Ms. Salvacion Castillo
 Mrs. Christie Cecil

Mr. and Mrs. Wallace K. Chang
 Ms. Gloria Chapman
 Mr. and Mrs. Harry Chow
 Ms. Colette Cobb
 Mrs. Udell Colleado
 Mrs. Mavis Cook
 Mr. Pete Corotan
 Margaret K. Couttie
 Mrs. Doris M. Crafts
 Teal and Patricia Cross
 Michael Darnall
 Ms. Sharon Davis
 Mr. and Mrs. Garry Dean
 Mr. Frank Degele
 Mr. and Mrs. William Dempsey
 Mrs. Terry DeVera
 Ms. Kay Dixon-Nichols
 Mrs. Fujiko Dochin
 Dr. and Mrs. David Doi
 Ms. Judy Ebanetz
 Mr. and Mrs. Masao Endo
 Ms. Patricia Engelhard
 Mr. Chris English and
 Ms. Wendy Joyce
 Venetta Enos
 Mr. and Mrs. Harold Erickson
 Mrs. Linda Eskaran
 Martin and Blanca Evangelista
 Mrs. Cindy Evans
 Ms. Virginia Frazier Eveland
 Fashion Consignment Studio
 Mr. and Mrs. Rocket Fergerstrom
 Melvina Fernandez
 Foodland Supermarket Ltd.
 Ms. Winifred Foskett
 Four Seasons Hualalai Resort
 Mr. and Mrs. Kunio Fujii
 Mrs. Eiko Fujino
 Ms. Sara Fuller
 Mrs. Harue Furumoto
 Ms. Emily Gail
 Ms. Janice Gail
 Ms. Betty Gerety
 Mr. and Mrs. Jon Giffin
 Mr. Leonard M. Gion-Ttee
 Mr. and Mrs. Teruo Goma
 Mr. and Mrs. David Gomes
 Ms. Petra Goodrich
 Ms. Mare Grace
 Ms. Daphne Gray
 Mr. and Mrs. James S. Greenwell
 Dr. and Mrs. Jed Groom
 Ms. Rita Grove
 Mr. and Mrs. Richard Hanano
 Ms. Phyllis Hanson
 Ms. Ilene Hara
 Hawaii Forest and Trail
 Ms. Sherryle Heafner

Mr. and Mrs. Pete Hendricks
 Mrs. Della Henriques
 Ms. Mary Hettinger
 Ms. Sueko and
 Ms. Mutsuko Higashi
 Mr. and Mrs. James W. Higgins
 Ms. Annette Hikichi
 Itsue Hino
 Ms. Jan M. Hino
 Mr. Herbert Hirayama
 Mr. and Mrs. Jay Hirsh
 Mr. and Mrs. Allan Honey
 Mrs. Elaine Honma
 Mr. and Mrs. Robert Hons
 Ms. Linda Hunter
 iGive.com
 Inter-Island Appraisal Co.
 Mrs. Alice Ishii
 Mr. and Mrs. Terrence Ishikawa
 Mr. and Mrs. Takemori Ishiki
 Mr. L.H. Jaynes, Jr.
 Mr. Richard L. Jeffery
 Mr. and Mrs. Chris Johnson
 Mr. and Mrs. Thomas Y. Kadota, Jr.
 Mrs. Kauano Kamana
 Mr. and Mrs. Chris Kanazawa
 Hazel and Roku Kanekuni
 Mr. and Mrs. Ellsworth Kaohi, Sr.
 Mrs. Kikuyo Karimoto
 Ms. Joanne Kawamata
 Mr. and Mrs. Randall Kawasaki
 Mrs. Lida Kim
 Mr. and Mrs. Charles Kimura
 Mr. and Mrs. Masato Kimura
 Mr. and Mrs. Sam Kimura
 Mr. and Mrs. Fumiyuki Kiyota
 Mr. and Mrs. Clyde Kobayashi
 Kohala Divers
 Paul Kopriva
 Mr. Mamoru Kotake
 Marlene Kufrovich
 Kukio Golf and Beach Club
 Ms. Elaine H. Kurokawa
 Mr. and Mrs. Clem Lam
 Mrs. Carolyn Lane
 Mr. and Mrs. Ian Langevin
 M. Larrua
 Ms. Eleanor A. Laszlo
 Mrs. Pat Lee
 Mr. and Mrs. Wade Lee
 Mr. and Mrs. Hilton Lewis
 Ms. Diane Ley
 Lilikoi Cafe
 Mr. Allen H. Lindsey
 Mr. and Mrs. Melvin R.G. Liwai
 Ms. Anna Loo
 Mr. and Mrs. Howard Loo
 Ms. Sharon Lorch

Mr. and Mrs. Wayne Luzon
 Jamie L. Maldonado
 Ms. Pamela Marquez
 Mr. and Mrs. George Martinson
 Mr. Masakichi Masaki
 Mr. and Mrs. Robin Matsushita
 Mauna Kea Soil &
 Water Conservation District
 Mr. and Mrs. Tim McCullough
 Mr. and Mrs. John McDonald
 Ms. Tisa McManus
 Mr. Bill McPeck
 Mr. Stephen McPeck
 Ms. Juana Mejia
 Dr. and Mrs. Donald Merz
 Ms. and Ms. Lorraine Methven
 Mr. and Mrs. Thomas Mikita
 Mrs. Elaine Mills
 Mr. Gene Mitsunami
 Ms. Audrey Mizokami
 Ms. Juanita Montgomery
 Dr. and Mrs. Andrew L. Morgan
 Ms. Lisa Morriss
 Mrs. Yae F. Murai
 Ms. Iris Nakagawa
 Mr. and Mrs. Elmer Nakasato
 Mali Napoleon
 Ms. Izzy Nelson
 Ms. Daphne Niau
 Kay Dixon Nichols
 Mr. and Mrs. Erik Nielsen
 Ms. Charlene Nishida
 Mr. and Mrs. George Nishimura
 Mr. and Mrs. Michio Nitta
 Mr. Ronald Noa
 Mr. Glenn Nojiri
 Ms. Colleen Norris
 Ms. Arlene Ohta
 Kimiyo and Wayne Ohta
 Mr. Alvin Oshiro
 Mr. Paul T. Oshiro
 Emily Miyashiro & Takako Ota
 Ms. Jeannie Palermo
 Ms. Patricia Pampo
 Mr. and Mrs. Gerrit Pasco
 Mr. and Mrs. Braley S. Pastorino
 Mr. Craig Pautler
 Mrs. Jessica Pavao
 Mr. Barry Pearce
 Ms. Glenda Pell
 Mr. and Mrs. John Perreira
 Mr. and Mrs. Henri Peter-Contesse
 Mr. Norman Piianaia
 Mr. and Mrs. Guy H. Piltz
 Ms. Anita Politano-Steckel
 Mr. and Mrs. Tom Powell
 Mr. Richard Prohoroff
 Ms. Pauline H. Pule

Ms. Mary C. Quinn
 Mrs. Joanne Ralston
 Mr. and Mrs. John Reardon
 Mr. and Mrs. Freddie Rice
 Ms. Christine Richardson
 Ms. Carolyn Riley
 Mr. and Mrs. Franklin M. Rivera
 Christopher Roehrig
 Ms. Priscilla A. Roque
 Mauro Sagucio
 Mr. and Mrs. Ralph Saito
 W. D. Sakovich
 Mr. and Mrs. Cole Salera
 Mr. and Mrs. Ben Sales
 Mr. and Mrs. Ray Salley
 Yuriko Sameshima and
 Joanne Sameshima
 Ms. Linda Santiago
 Tamotsu Sasaki
 Miss Veronica S. Schweitzer
 and Mr. Richard Gordon
 Mr. Rudy Serain
 Mrs. Pauline Shinshiro
 Takumi R. Shirakawa
 Mr. and Mrs. Gerald Smith
 Starbucks
 Dr. and Mrs. Randall Stoddard
 Ms. Lauren Stovall
 Mr. and Mrs. James Stowell, Jr.
 Ms. Priscilla Studholme
 Ms. Alysandra Sunahara
 Mr. Clyde Takayama
 Miss Pauline Tamanaha
 Mr. and Mrs. Milton Tanoue
 Mr. Allen Teshima
 The Paradise Post
 Mr. and Mrs. Jim R. Thill, Sr.
 Tiffany & Co.
 Mr. and Mrs. Steve Toma
 Mrs. Sandie Torres
 Karl Toubman and Kathie Pomeroy
 Mr. and Mrs. John Trino
 Mr. and Mrs. Glenn Uchimura
 Mr. and Mrs. Anthony Venegoni
 Dr. Sharon Vitousek and
 Mr. Roy Vitousek, III
 Ms. Ellen Von Barfuss
 Mr. and Mrs. George Wachi
 Mrs. Gwendolyn Wallace
 Mr. Keith Wallach
 Mr. Keith Wallis
 Mrs. Tami Watanabe
 Miss Sabrina White
 Thomas Whittemore

Margaret Wille
 Ms. Irene Wong
 Mr. and Mrs. Ichiro Yamaguchi
 Mr. and Mrs. Curtis Yamamoto
 Mrs. Momoe M. Yamamoto
 Ronald Yamamoto
 Andre and Roy Yee
 Ms. Elsie S. Yoshimatsu
 Dr. Virginia Zimmerman, M.D.

IN KIND DONATIONS

Bentley's
 Thomas Blackburn, Ph.D.
 Buzz's Sand Trap LLC
 Mr. and Mrs. Rick Casey
 Sharon Davis
 Connie Firestone
 Four Seasons Resort Hualalai
 Hawaii Forest and Trail
 Elizabeth Heller
 Dee Dee Hoffmann
 Jim and Beth Hood
 Roen Hufford
 Island Herbal
 Jerry Jamesson
 Everett Knowles
 Kohala Divers, Ltd.
 Beth and Phil Krause
 KTA Super Stores
 Kukio Golf and Beach Club
 Randee and Bruce Kumove
 Rhoady Lee, III and Alan Gartenhaus
 Lilikoi Cafe
 Mauna Kea Beach Hotel
 Forrest McFall and Helen Swinney
 Stephen McPeck
 Merriman's Restaurant
 Dave and Laura Monahan
 Amanda Norman
 North Hawaii Oral and Facial
 The Paradise Post
 Mr. and Mrs. Tom Powell
 Denise Ray
 Brigitte and Nick Rutgers
 Mr. and Mrs. Jerry Sakamoto
 Suzanne Sasaki
 Starbucks Coffee Company
 Lisa Swisher
 Tiffany & Co.
 Alvin Wakayama
 Linda West
 Mr. and Mrs. Woodson K. Woods



NORTH HAWAII HOSPICE STAFF

Katherine Ciano, MHA, BSN
 Executive Director

Colleen O'Sullivan, RN, BSN
 Clinical Administrator

Colleen Norris, MBA
 Director of Finance

Gayle Hubbard
 Administrative Assistant

Cindy Sheldon
 Clinical Services
 Assistant

Reinhard Fritsch, RN, PhD
Nina Millar, RN
Debbie Washburn, RN
 Patient Care Managers

Mark Therrien, LCSW
 Social Worker

Juli Szilagyi, MEd
 Volunteer Coordinator

Sindona Cassteel, MS
 Bereavement Counselor

Sally Kaufmann, RN
Lisa Lawrence, RN, CHPN
Christine Richardson, RN
Kristin Wohlschlagel, RN
 On-Call Nurses

Lilli Gross, CNA
Sandie Rossi, HA
 Hospice Aides

*We apologize if we have inadvertently
 omitted acknowledging your gift or misspelled a name.
 Please call Colleen Norris at (808) 885-7547.*

North Hawaii Hospice

65-1328 Kawaihae Road
Kamuela, Hawaii 96743
(808) 885-7547

www.northhawaii hospice.org



If you received two copies of this newsletter or wish to be removed from our mailing list, please call the office at (808) 885-7547 for assistance.



Non Profit
Organization
U.S. Postage

PAID

Kamuela, Hawaii
Permit No. 20



COMMUNITY BEREAVEMENT PROGRAMS

CIRCLES OF SUPPORT

The Journey of Grief and Reconciliation

6 week Group: Meets on Mondays
November 8th through December 13th, 2010
February 7th through March 14th, 2011
4:30pm - 6:00pm

RETURNING TO CENTER: THE HEALING POWER OF MANDALAS

Explore using art in healing grief
(no art experience necessary)
Saturday, March 5th, 2011
10:00pm – 1:00pm

**Both Programs will be held at TUTU'S HOUSE Waimea
with Sindona Cassteel, MFT**

RSVP by calling Hospice (885-7547) or Tutu's House (885-6777)

*"Grieving is a process, taking as long as it takes—
It may never truly end, but it will always change"*